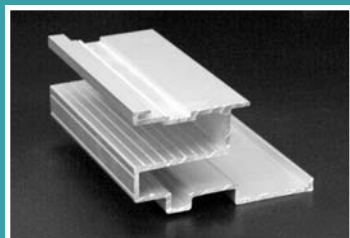
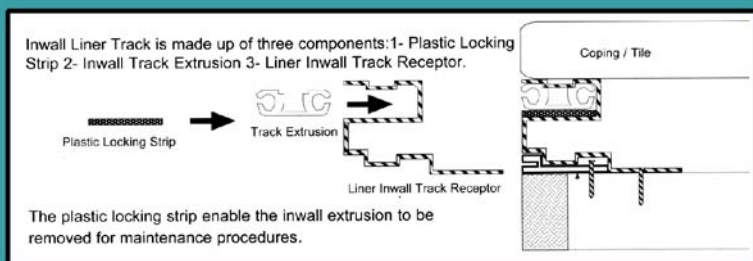
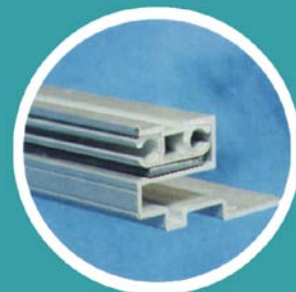


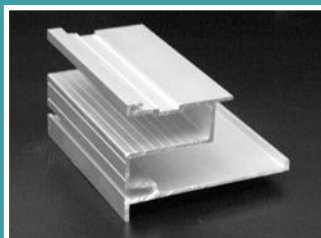
# Encapsulated "In-wall" Receptor for Vinyl Liner Pools

## Designed by Aquamatic

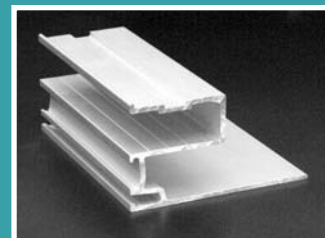
This extrusion can be used on any liner type pool. Steel, polymer or wood wall. The extrusion is installed at the time of the pool construction on the top of the pool wall. Copings or other masonry material are placed directly on top of the track receptor.



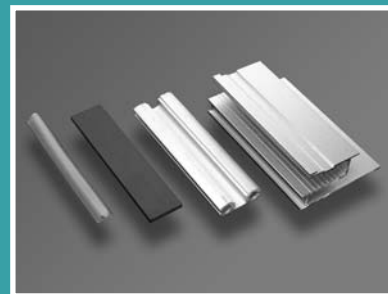
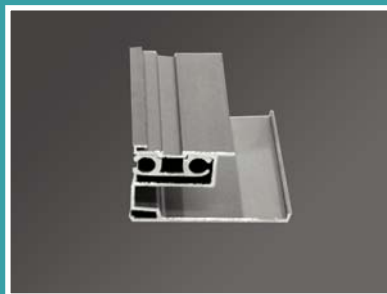
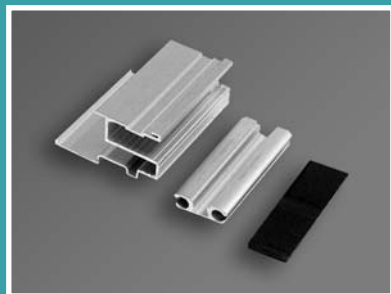
Inwall #2 without Liner Bead



Inwall #3 with Liner Bead



Inwall #6



- Fiberglass / Concrete Pools
- Fits standard perimeter fiberoptic lighting
- For use with non-standard coping, brick/tile pavers and stone
- Available in 12' 18' & 21' lengths

- Snap-in fascia to finish off at end of pool.
- 6063T-5 anodized aluminum.
- Can be color coated to match decking material.



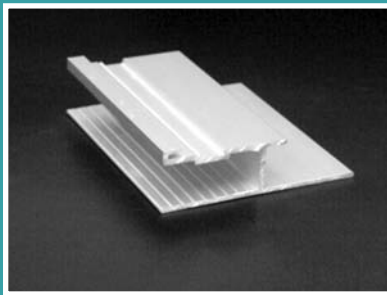
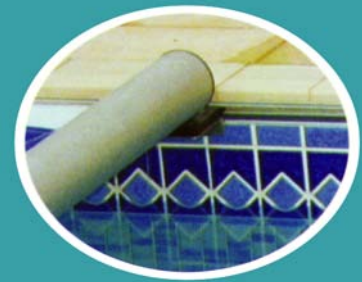
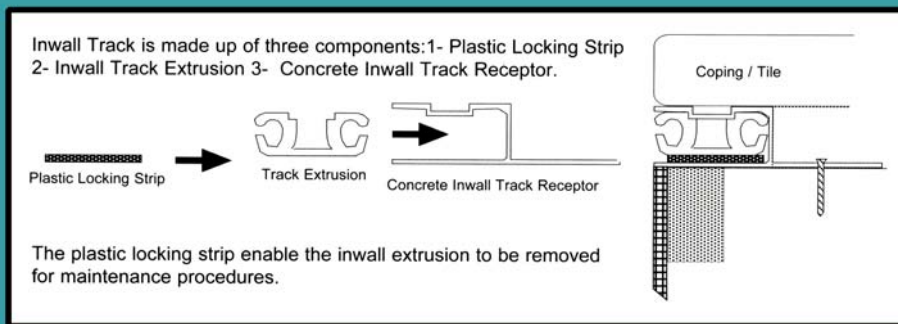
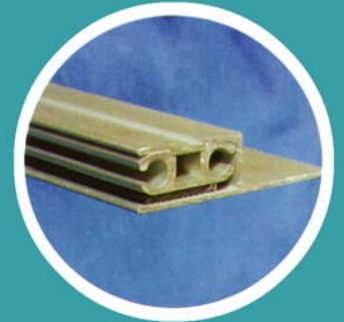
This product is covered by one or more of the following patents:  
6,398,680;6,026,522; 5,950,253;5,930,848; 5,927,042;5,845,343;  
5,799,342;5,546,751; 5,349,707;5,327,590; 5,184,357;5,067,184; 4,939,798  
Other U.S. and foreign patents pending

200 Mayock Rd. Gilroy, CA 95020 Phone 1-800-262-4044 Fax 408-846-1060

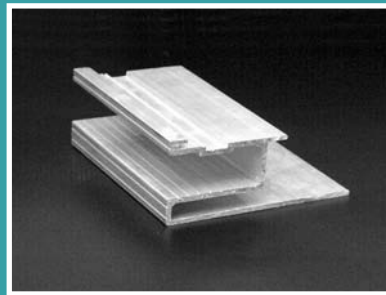
# Encapsulated "In-wall" Receptor for Concrete Pools / Gunitite

## Designed by Aquamatic

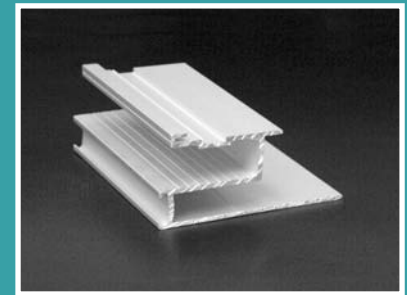
Concrete Inwall tracking is ideal for indoor and outdoor pool installation. The tracking is installed at the time of the pool construction on the top of the pool wall. Copings or other masonry material are placed directly on top of the track receptor.



Inwall #1

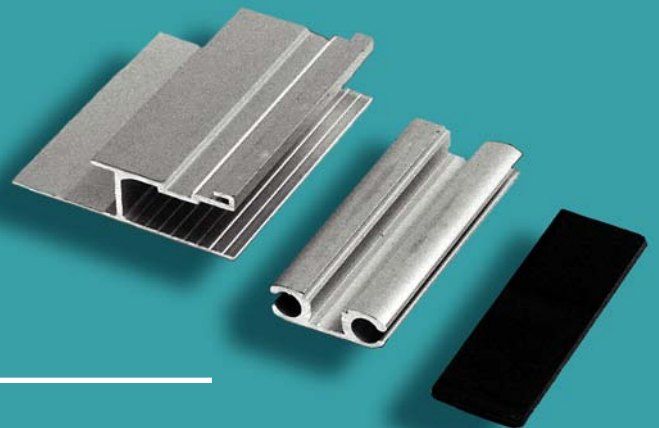


Inwall #4



Inwall #5 w/ fiberoptic receiver

- Concrete / Gunitite Pools
- Ideal for raised beam details
- For use with non-standard coping, brick/tile pavers and stone
- Available in 12' 18' & 21' lengths
- Snap in fascia to finish off at end of pool
- 6063T-5 anodized aluminum
- Can be color coated to match surround

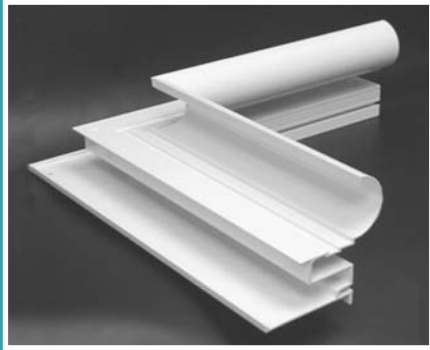


This product is covered by one or more of the following patents:  
6,398,680; 6,026,522; 5,950,253; 5,930,848; 5,927,042; 5,845,343;  
5,799,342; 5,546,751; 5,349,707; 5,327,590; 5,184,357; 5,067,184; 4,939,798  
Other U.S. and foreign patents pending

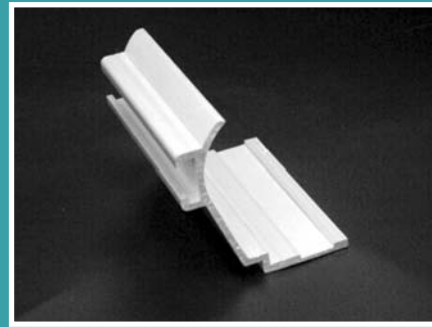
200 Mayock Rd. Gilroy, CA 95020 Phone 1-800-262-4044 Fax 408-846-1060

# Alternative Track Receptors and Accessories

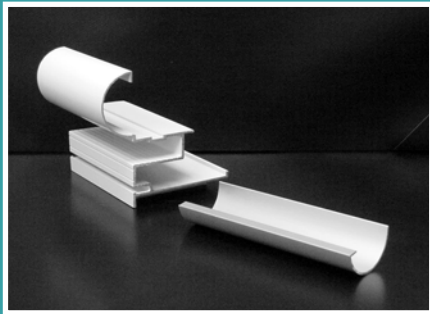
---



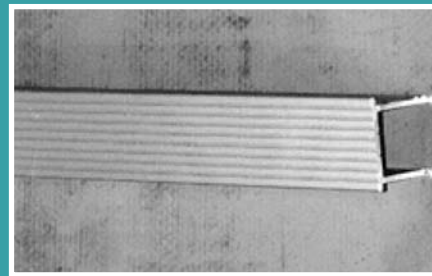
**Inwall 3DF (Deck Form)**  
Designed specifically for Vinyl Liner Pools with a permanent bullnose deck form.



**Reusable deck form in "Capstone" finish.**  
Can be used with any Aquamatic inwall track receptor.



**3DF with connecting splice**  
Incorporates track, liner bead and permanent deck form.  
Available in white or gray powder coated finish.



**Snap in trim**  
Used for decorative finish if receptor is installed on opposite end wall.



This product is covered by one or more of the following patents:  
6,3980,680;6,026,522; 5,950,253;5,930,848; 5,927,042;5,845,343;  
5,799,342;5,546,751; 5,349,707;5,327,590; 5,184,357;5,067,184; 4,939,798  
Other U.S. and foreign patents pending

200 Mayock Rd. Gilroy, CA 95020 Phone 1-800-262-4044 Fax 408-846-1060