

# HYDRALUX

The Most Advanced *Pool Covers*



World Leaders in Automatic Pool Covers





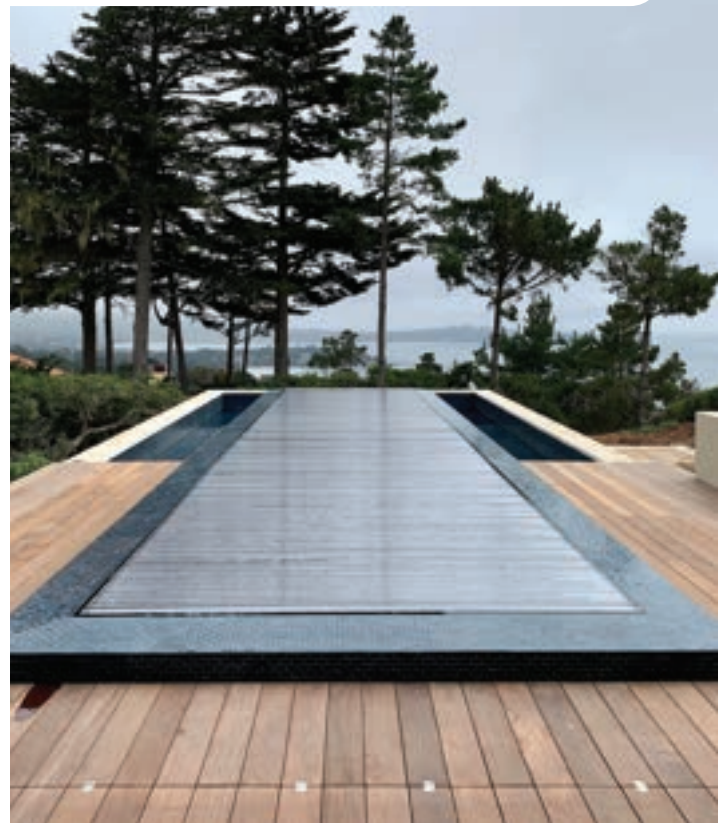
**World Leaders in  
Automatic Pool Covers**





# HYDRALUX

The Most Advanced *Pool Covers*

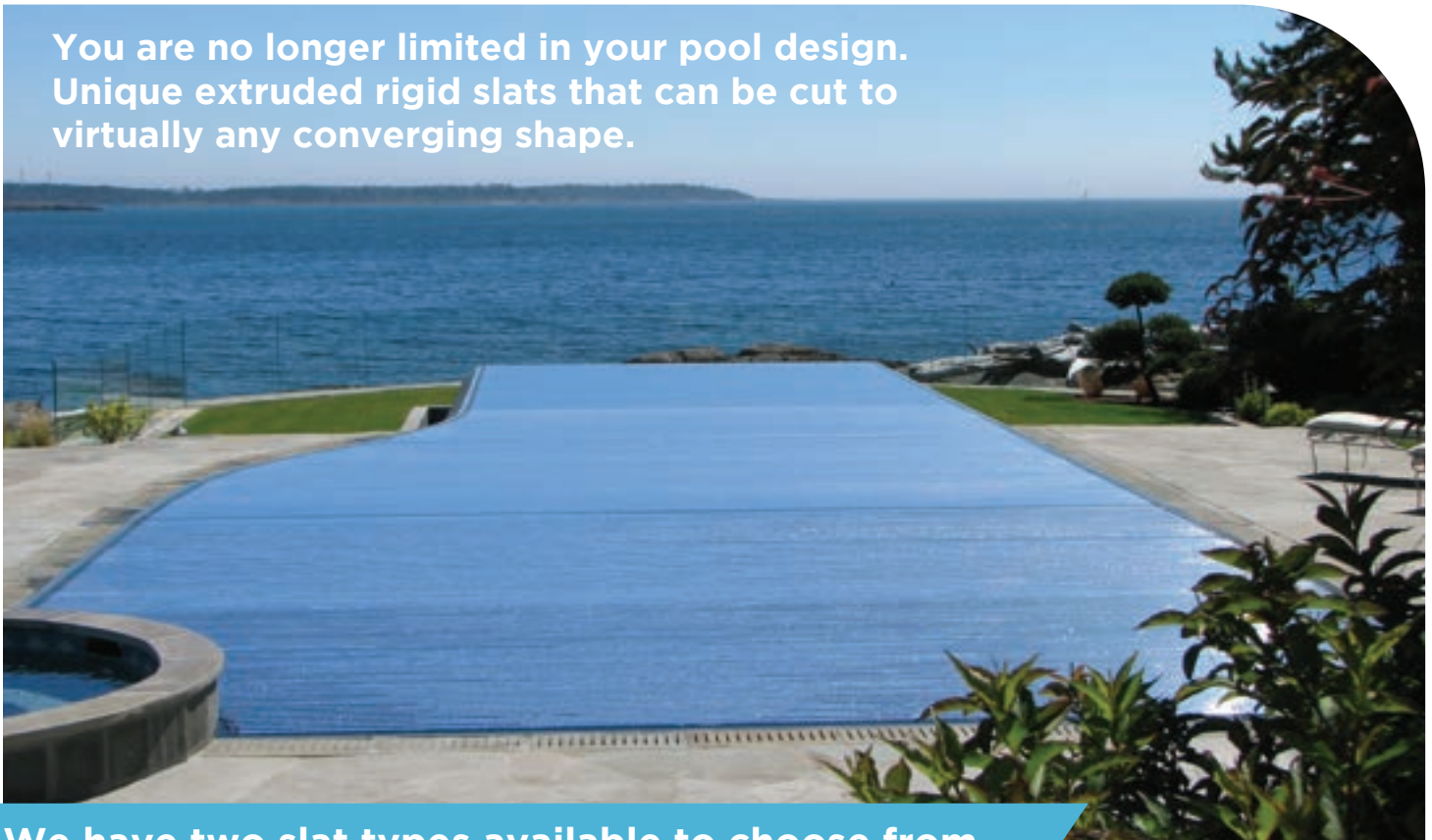


# A Unique Cover for a Unique Pool

**HydraLux** is the most advanced pool cover system designed and manufactured by **Aquamatic Cover Systems**. It is a European slat style that incorporates proven Aquamatic hydraulic technology.

The **HydraLux** is the only pool cover that provides automation without the use of tracks, ropes and leading edge bars found on traditional automatic cover systems. In addition, multiple covers can be deployed from a hidden recess in the pool floor to allow for complex pool shapes.

You are no longer limited in your pool design. Unique extruded rigid slats that can be cut to virtually any converging shape.



We have two slat types available to choose from.

Our standard slats are a hollow core with three air chambers, available in white, sand, light blue, and light gray. We also have three optional slats with the hollow core, translucent, and two types of solar (translucent top/black bottom, and metallic top/black bottom). The slats have a 5 year limited warranty.





The **HydraLux** is a unique automatic pool cover that utilizes extruded rigid PVC or Polycarbonate slats. This slat design eliminates the rope track interface and can provide automation pools that previously could not accept traditional automation on pool covers.

The design characteristic of the hollow slat uses three chambers, that when sealed provide a 1/2" airspace giving the cover an excellent insulating quality. This cover is also ideal for commercial pools, or pools that are maintained in cooler climates.



# Limited Only by Your Imagination



Water features, such as laminars, spa overflows can run while the cover is closed.







The Recess can be covered with the same materials as the coping and/or deck surround and can accommodate any masonry products. The beam supports are keyed into the bond beam of the pool providing a secure application.

In some cases, the stainless steel beam can be finished with the same perimeter tile as the pool finish, as shown below. Both the beam and pan are constructed of 316 stainless steel. Special beam and pans details can be designed upon request.



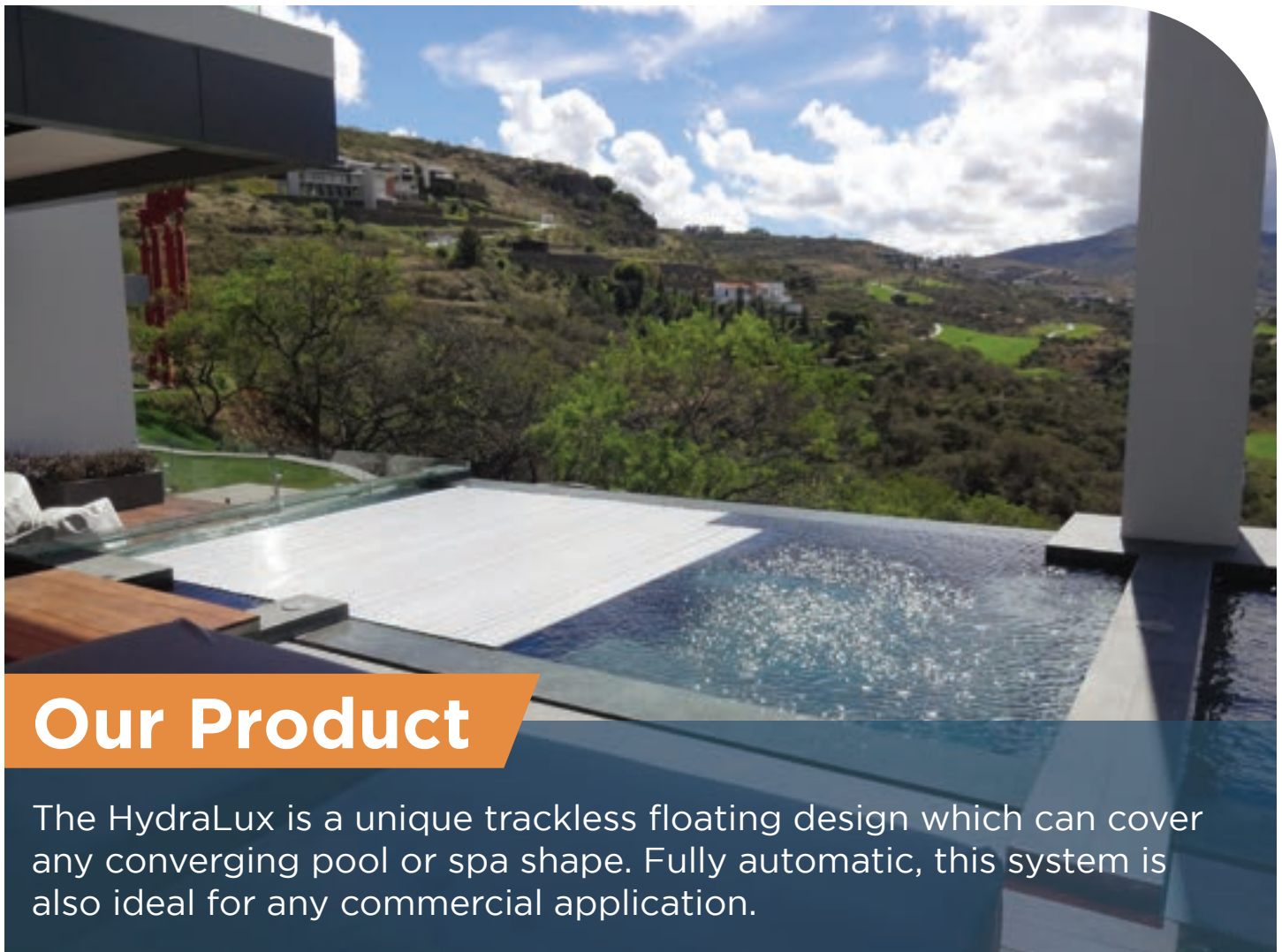




# The **Hydralux** Offers Unmatched Aesthetics.

Along with its unique energy savings properties, the Hydralux will offer you an excellent return on investment while significantly reducing your pool operating cost, and enhancing your pool ownership experience.





## Our Product

The HydraLux is a unique trackless floating design which can cover any converging pool or spa shape. Fully automatic, this system is also ideal for any commercial application.

### Operation

- ✓ Designed and developed by Aquamatic Cover Systems.
- ✓ Proven robust hydraulic drive technology.
- ✓ Key switch control standard or optional hand held remote.
- ✓ 20 year limited mechanism warranty.
- ✓ 5 year limited warranty on hollow core slat.

### Installation

- ✓ Recessed, in-floor or deck mounted (see illustrations within this brochure.)

### Materials

- ✓ The pool cover consists of extruded rigid profiles floating on the water.
- ✓ PVC slats available in four standard colors, with three optional polycarbonate choices.
- ✓ Color matched end caps.

**NOTE:** *The HydraLux cover is NOT a safety cover. It is solely designed as an energy saving device.*



# Model #1

Standard Mount  
Gallery





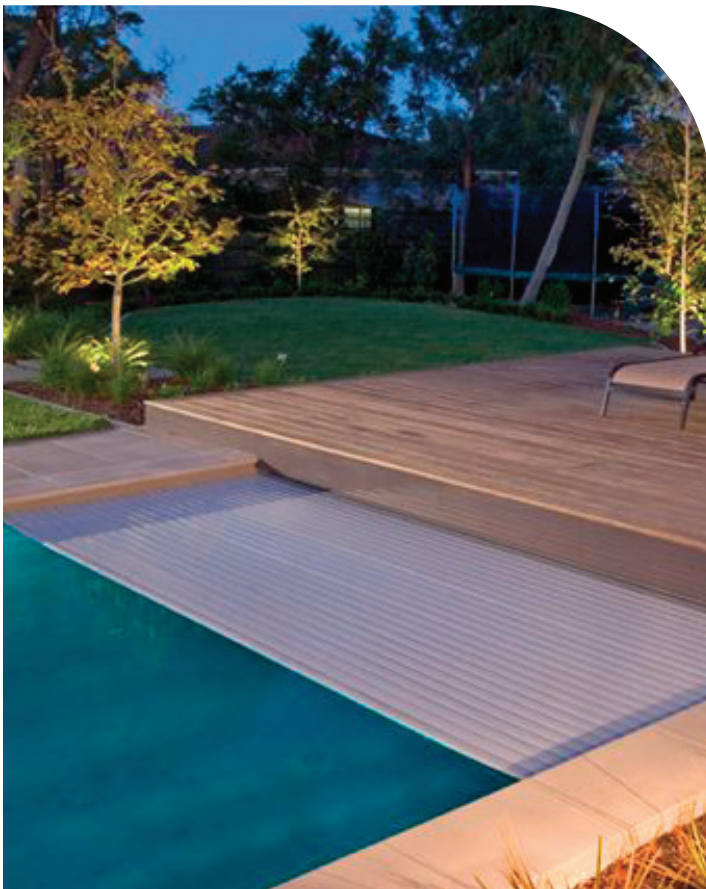
## Model # 1 Standard Mount Gallery

---



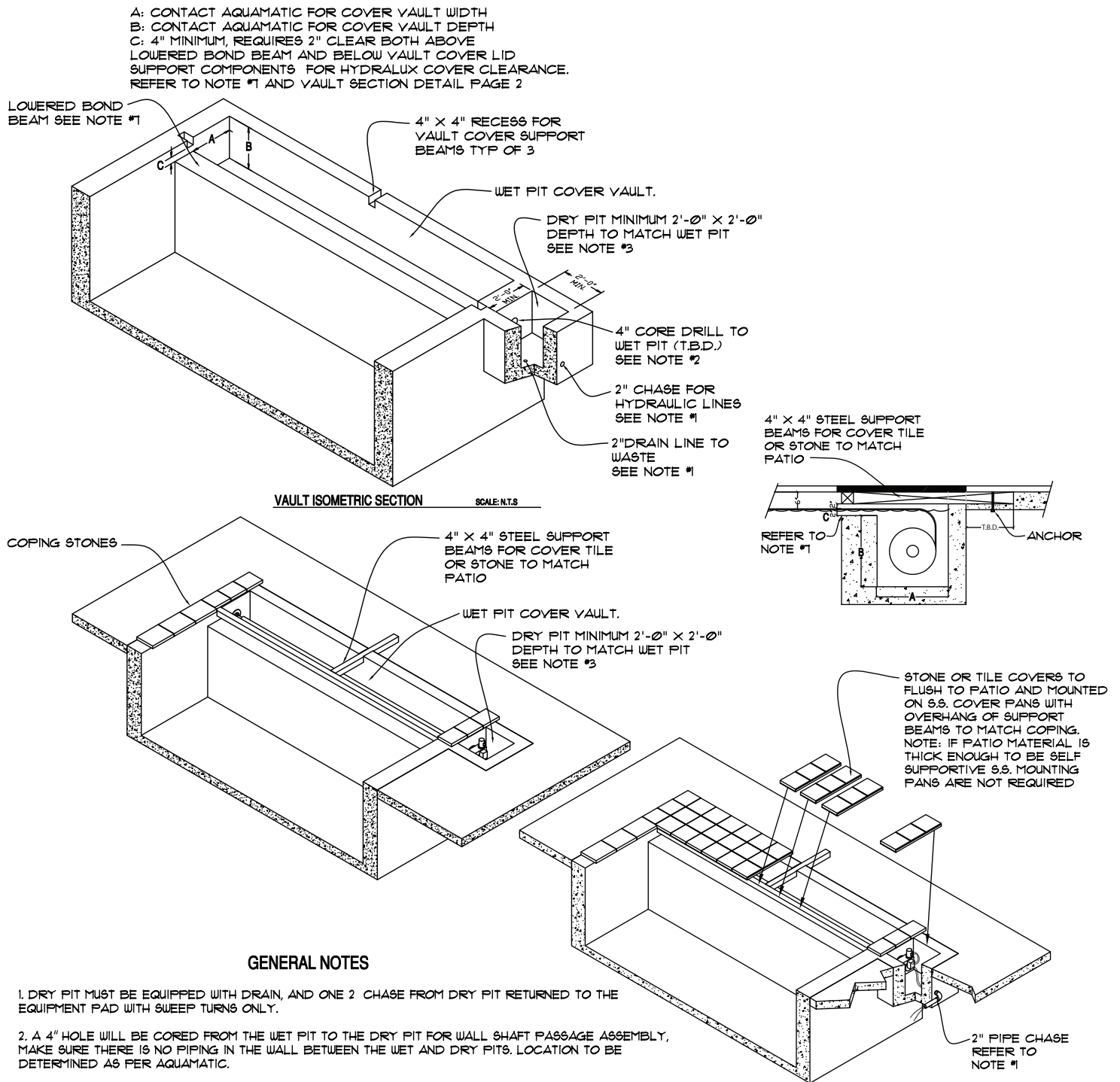


## Model # 1 Standard Mount Gallery Continued ...





# Hydralux Model # 1 Standard Mount

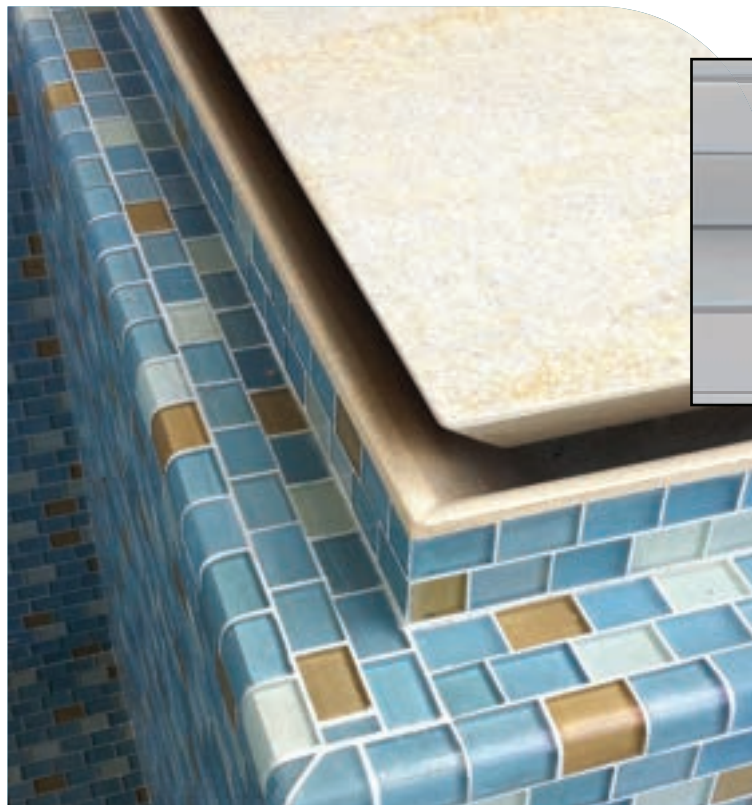
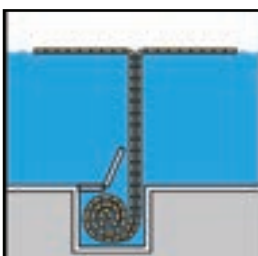
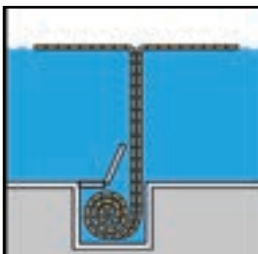
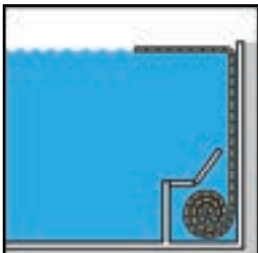






## Enhanced Security

Although not a safety cover, security can be enhanced by adding a support ledge all the way around the pool (as shown to the lower right). With the patent pending hinge connection, where the vertical & horizontal slats connect, center closure is assured.



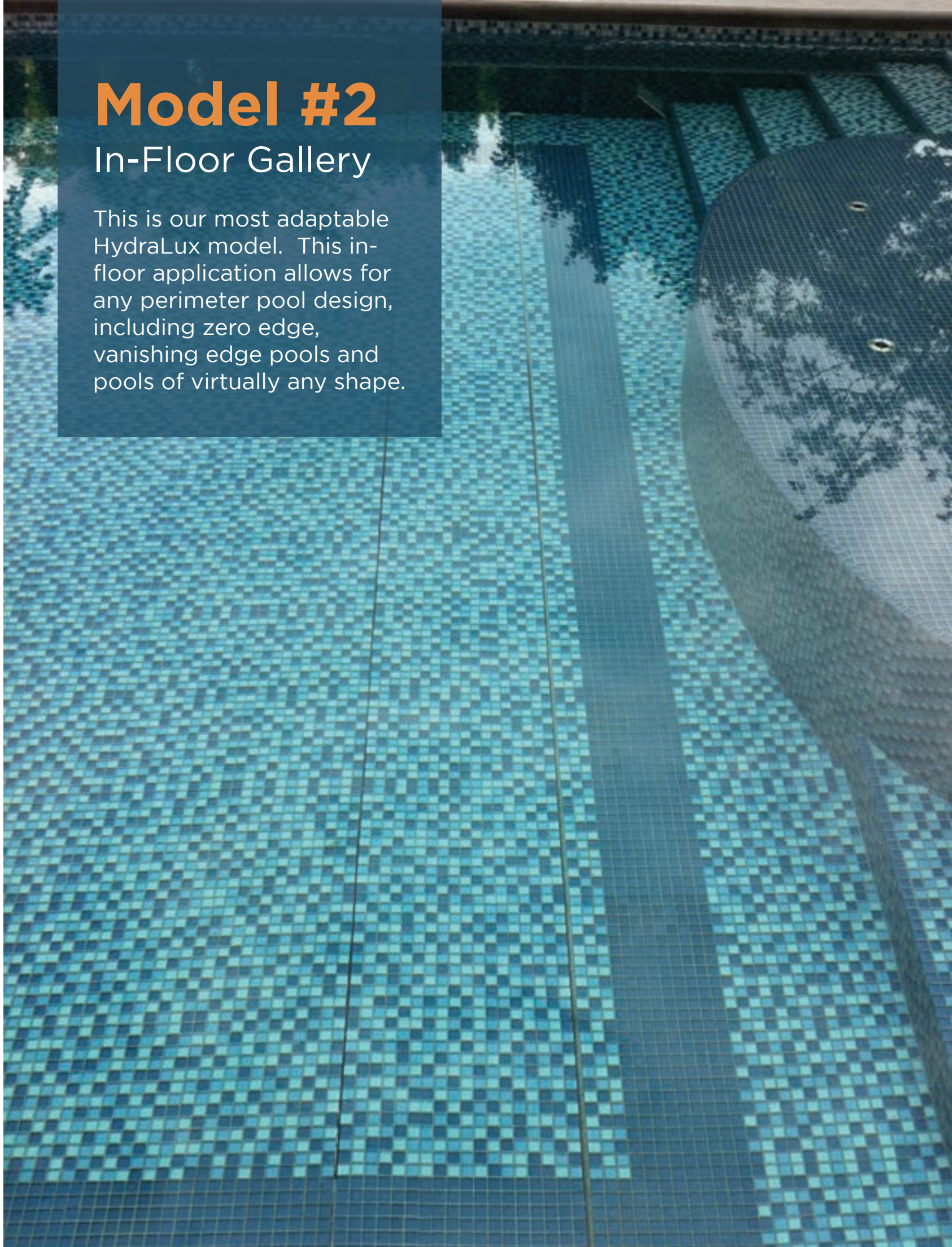
Hinge  
Connection



# Model #2

## In-Floor Gallery

This is our most adaptable HydraLux model. This in-floor application allows for any perimeter pool design, including zero edge, vanishing edge pools and pools of virtually any shape.





## Model # 2 In-Floor Gallery Continued ...





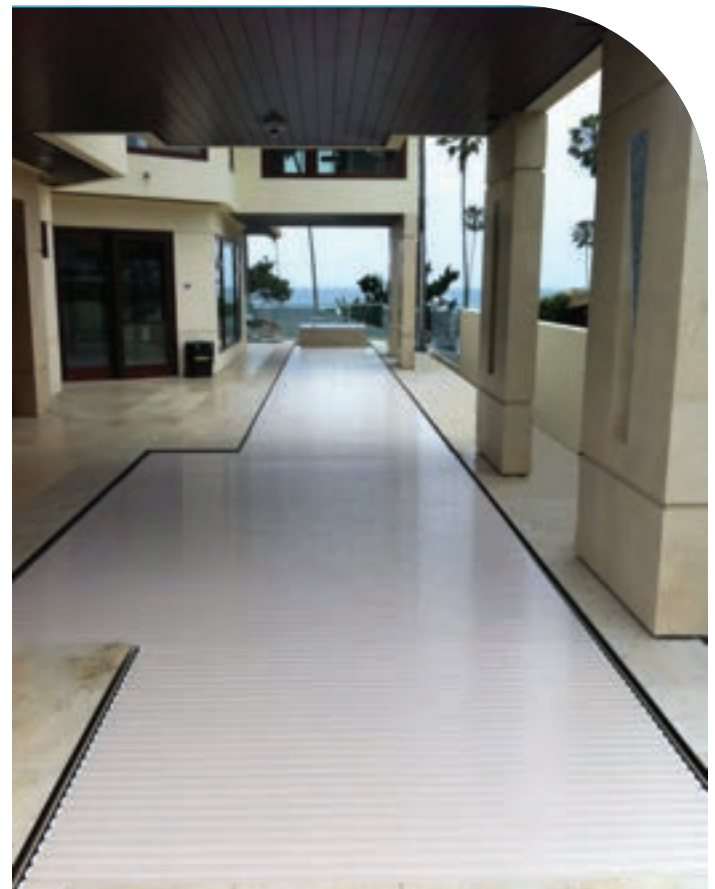
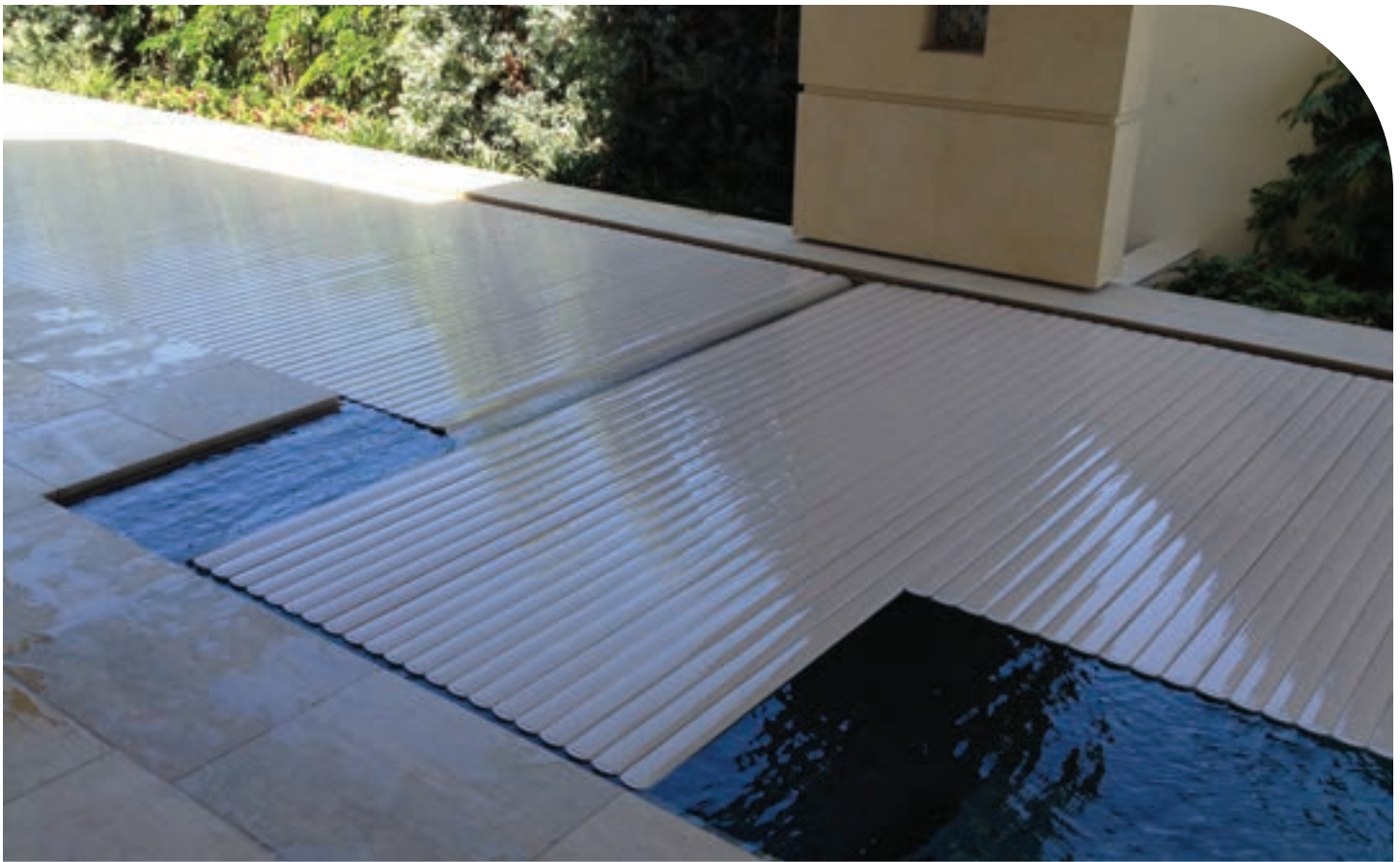




## Model # 2 In-Floor Gallery Continued ...

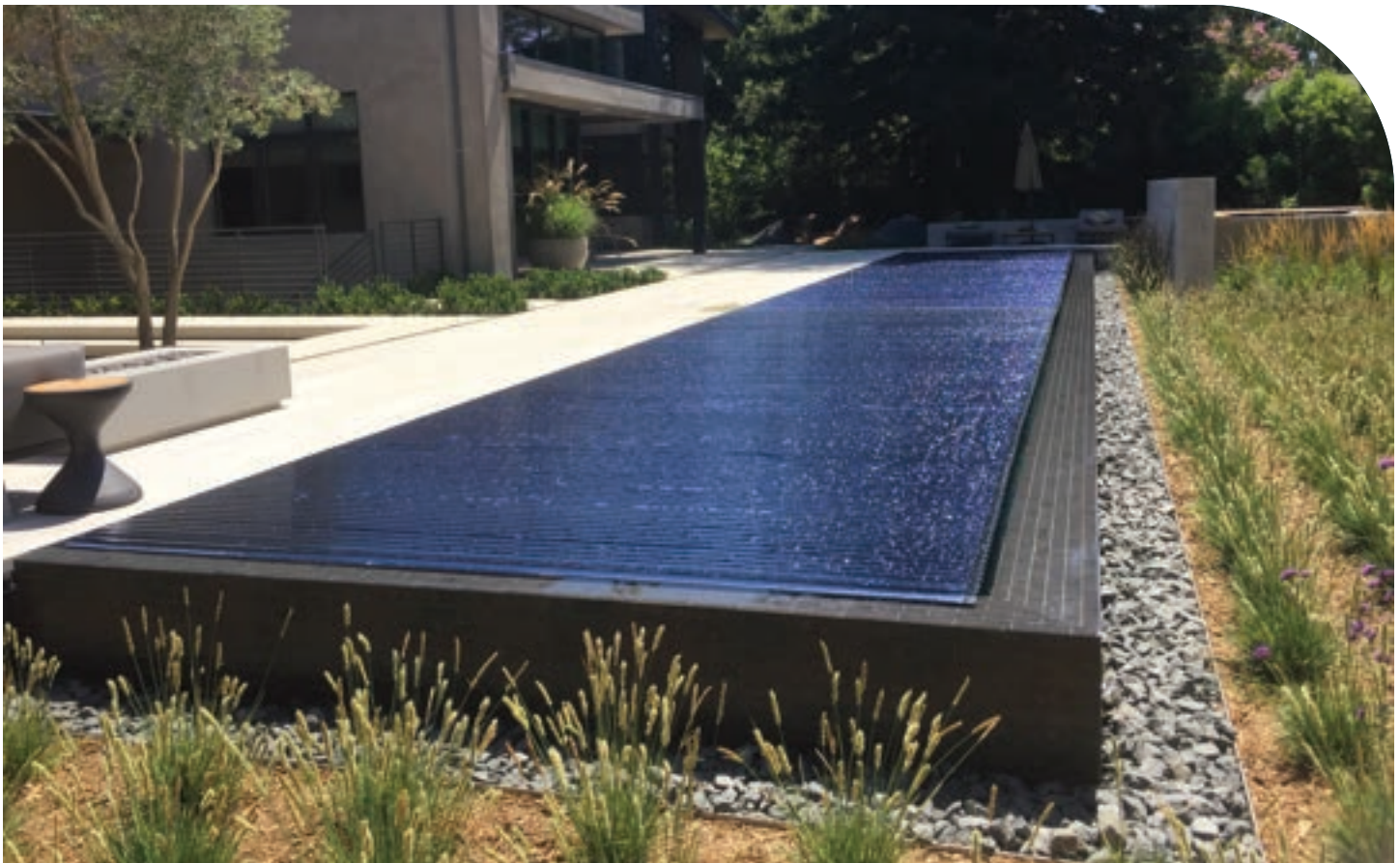








## Model # 2 In-Floor Gallery Continued ...





## Model #3,4,5

Similar in that they are installed under a cantilevered deck. In both of these applications the cover slats and drum assembly must be isolated from swimmers by a divider. The divider can be constructed in the same manner as model # 2 in-floor lid and finished the same way as the pool interior. The divider must be hinged and easily removable for cleaning and accessing the pool cover recess.

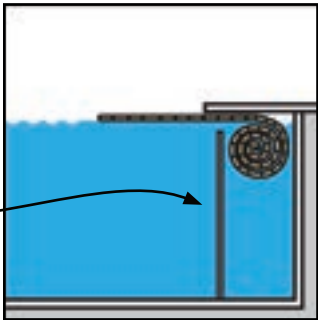




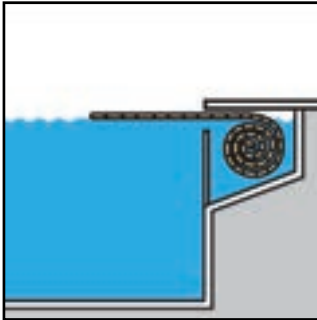
Model #3, 4, & 5 Continued ...



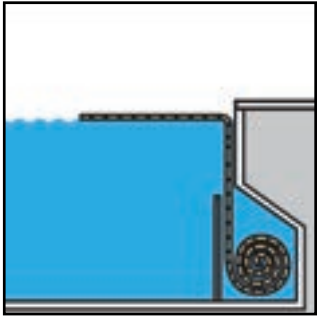
Protective dividers must be removable to allow for servicing



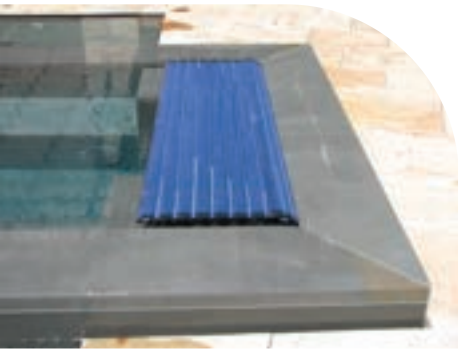
Model #3



Model #4



Model #5  
(Limited to Small Pools or Spas)





## Standard PVC Slats



## Polycarbonate Slats



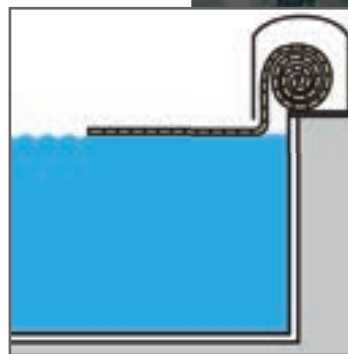


# Model #6

This model's retrofit housing can automatically be moved over the pool edge when deploying the cover to close and off of the pool surface when opening the pool to swimmers.



This application is optional, otherwise it can be mounted in a fixed application. A composite polymer enclosure is available in six colors (white, tan, gray, terra cotta, and brown).



On outdoor pools, a bench enclosure is mandatory as the slats must be protected from the sun when not in contact with the water surface.



# Sol-Lux retractable reel systems by Aquamatic.

The system is powered via solar panels and actuated with our proven all-fluid hydraulic technology.



- ✓ Ease of use, single person operation with a turn of a key or push of a button.
- ✓ Automated deployment and deck clearance up to 18' away from the pool edge.
- ✓ 20 year limited warranty on the hydraulic drive components
- ✓ 5 year limited warranty on solar panels
- ✓ 5 year limited warranty of cover slats
- ✓ Designed for large commercial applications, can also be used on any residential pool.
- ✓ On indoor pools, battery-powered with a built-in charger.

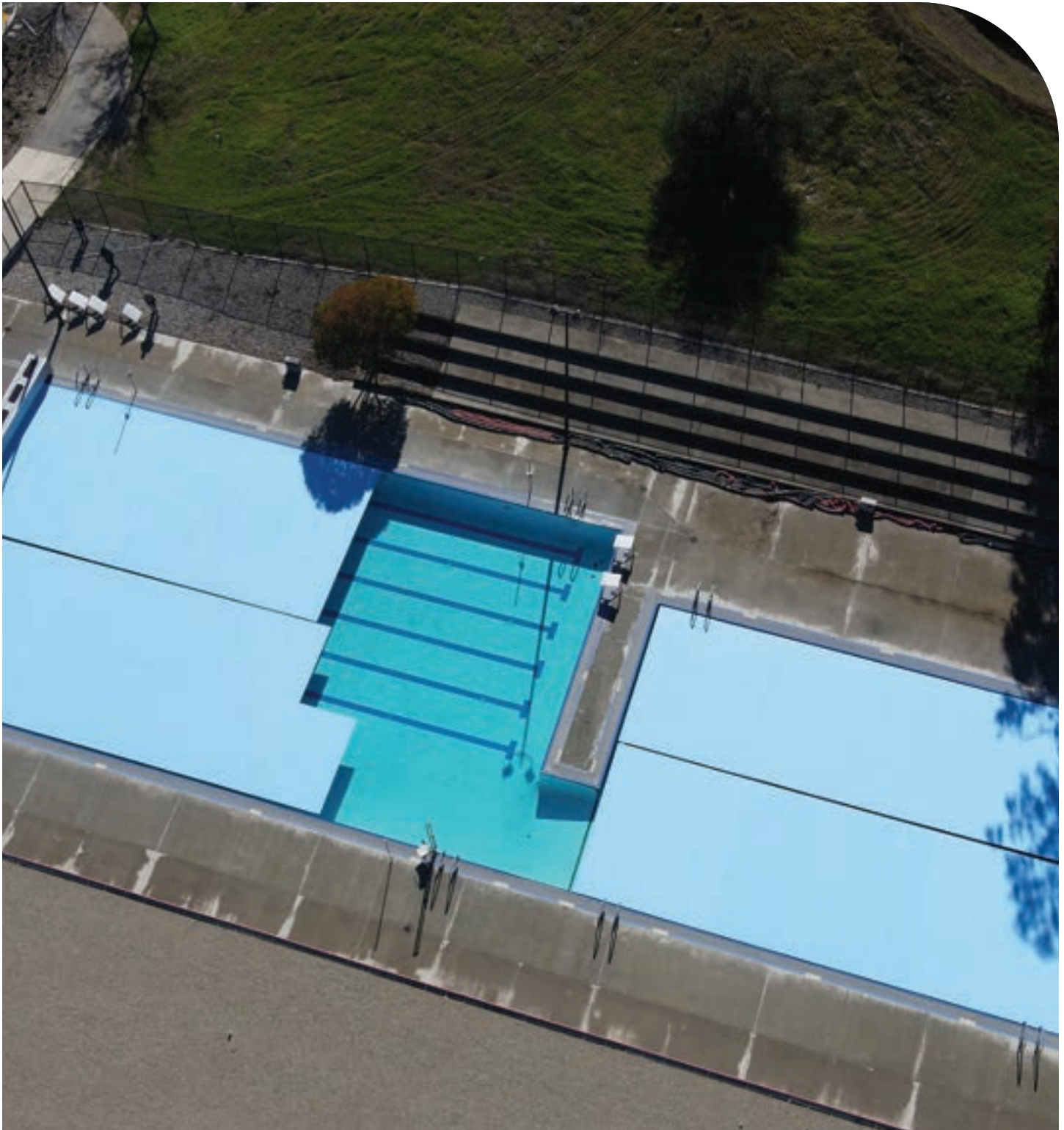


## Sol-Lux Retractable Reel Systems Gallery

---







**Photo credits:** Alka Pools, Aloha Pools, Aquascape Custom Crafted Pools, Aquatic Technology, Bradford Products, Bonavista Pools, Bravo Construction, Creative Master Pools, Diamond Spas, Drummond & Sons Pools, Hawaiian Island Pool Covers, High-Tech Pools, Kilo Pools, Mission Pools, Nautilus Pools, Pacific Pools, Paradise Pools & Gardens, Roger Willis Contracting, Timberline Pools, Wildwood Pools.





## **Aquamatic Cover Systems**

200 Mayock Road Gilroy, CA. USA 95020

Ph: 408.846.9274

**[www.aquamatic.com](http://www.aquamatic.com)**

Automatic & Manual Covers Since 1980  
Distribution and Installation Available Worldwide

These products are covered by one or more of the following patents:  
6,398,680; 6,026,522; 5,950,253; 5,930,848; 5,927,042; 5,845,343; 5,799,342;  
546,751; 5,349,707; 5,327,590; 5,184,357; 5,067,184; 4,939,798

Other U.S. and foreign patents pending