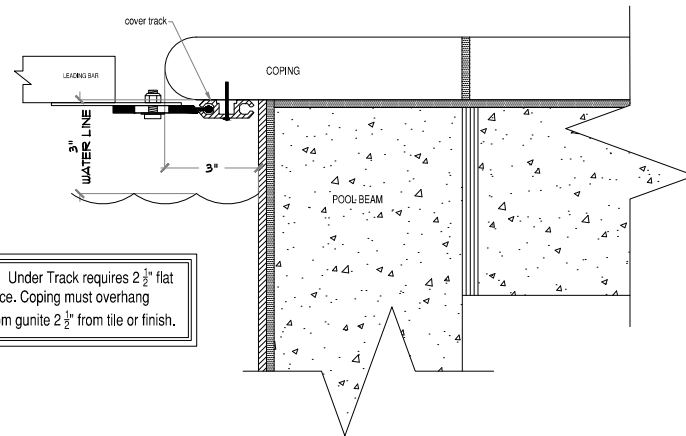


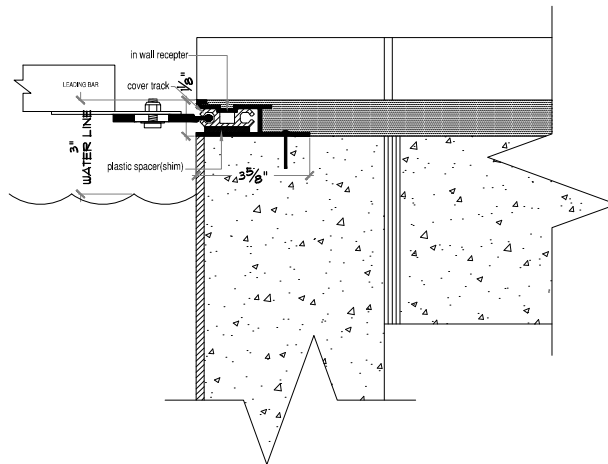
Note: Under Track requires 2  $\frac{3}{8}$ " flat surface. Coping must overhang 3" from gunite 2  $\frac{3}{8}$ " from tile or finish.

SQUARE COPING TRACK DETAIL SCALE: N.T.S.



Note: Under Track requires 2  $\frac{3}{8}$ " flat surface. Coping must overhang 3" from gunite 2  $\frac{3}{8}$ " from tile or finish.

BULLNOSE COPING TRACK DETAIL SCALE: N.T.S.



INWALL RECEPTOR TRACK DETAIL SCALE: N.T.S.

COVER STYLE: **HYDRAMATIC**  
 TITLE: **UNDER TRACK DETAILS**



Exclusive Manufacturer of the Hydramatic  
 Hydraulic Swimming Pool Covers  
 AQUAMATIC COVER SYSTEMS  
 200 Mayock Rd, Gilroy, CA 95020  
 Ph. 1.800.262.4044 / 408.846.9274  
 Fax: 800.600.7087 / 408.846.1060