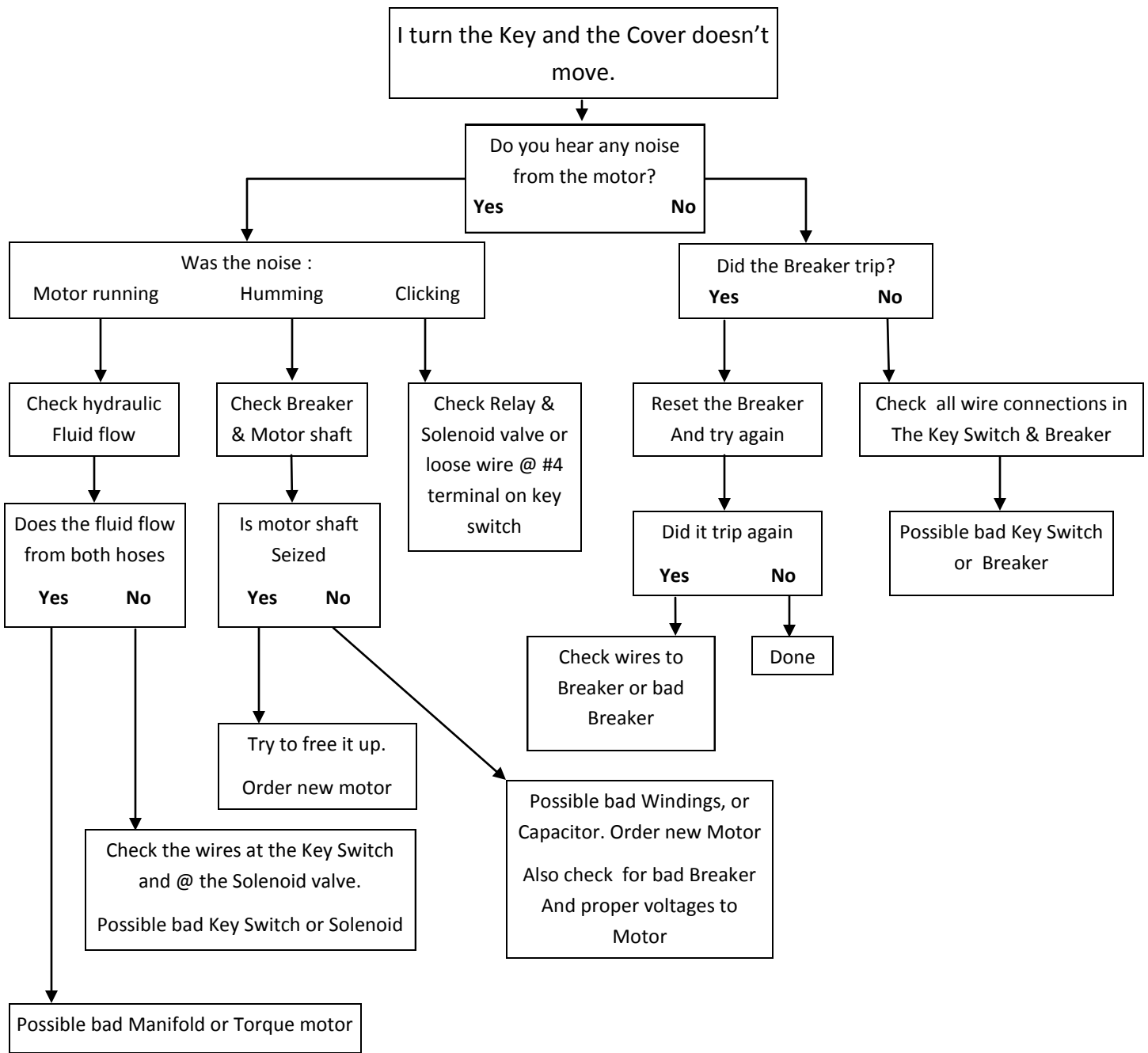


# Hydrumatic Trouble Shooting Guide



**ALL ELECTRICAL WORK SHOULD BE DONE BY AN ELECTRICIAN OR AQUAMATIC SERVICE TECHNICIAN**

## Testing a Relay

Remove the cover on the double gang junction box on the side of the Power Pack. The Relay will be nestled amongst the wires inside.

On the back side of the Relay (No Writing) in the center, near the top, you will see a slot that contains a small button. By depressing this button you will manually engage the relay, making a connection from the breaker to the motor. If the motor cycles when depressed, you have a faulty relay. If nothing happens, you may have a faulty breaker or bad wiring.

This only powers the motor. Doing this and turning the key switch at the same time will allow you to open or close the cover temporarily.

