

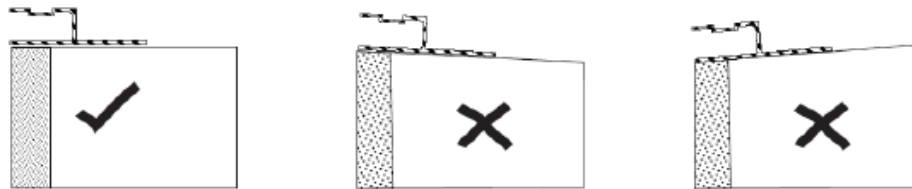


In-Wall Installation Guide - Page 1.

There are six different In-wall receptors for use in all forms of construction, concrete, fiberglass and vinyl liner. The basic installation methods will apply regardless of the pool construction.

Concrete or Fiberglass Pools

It is ideal to have the tile in place prior to installing the In-wall receptor, this way you won't have to guess as to the finished thickness of the tile. The In-wall will sit flush with the tile, so it is important that thickness is consistent the entire length of the pool. On concrete / gunite pools, the first 4" in. from the tile line back **MUST BE SMOOTH & LEVEL** as this will negatively affect the finished aesthetic appearance and the cover performance.



TRACK RECEPTOR MUST BE INSTALLED LEVEL

Step 1:

The In-wall receptor needs to be set flush with the tile and extend 2" in. beyond the pool and a minimum of 2" in. into the cover vault. This needs to be done on both sides. If an In-wall receptor is to be installed along the width of the pool, it must be installed between the two sidewall receptors. This piece will not have track in it, but instead a fascia strip. This will keep the same elevation as the surrounding sides of the pool.



After the receptors are installed, the tracks can now be installed into the receptors.

Starting at the shallow end of the pool, place the track (with the pulley attached) on top of the receptor. Set it so that the pulley is at the end of the pool and flush with then end of the receptor. The side of the track with the "U" groove faces up. This piece of track must be cut so that it ends up 1" in before or after the point where the two pieces of receptor meet. This is required to provide a secure track joint. Be sure to **Always file and deburr the ends of the track when a cut is made.** Lay the next piece of track in line with first and cut if necessary so that once again the end of the track is a minimum of 1" in. away from where two pieces of extrusions meet. If this is your last piece of track, be sure to extend it beyond the receptor into the cover vault. **This will be cut down later.**

After the tracks have been cut and deburred, it is advisable to run some rope or string in the track and around the pulley and in the back of the track, so that both ends of the rope end up at the cover vault . This will help later on when installing the cover.

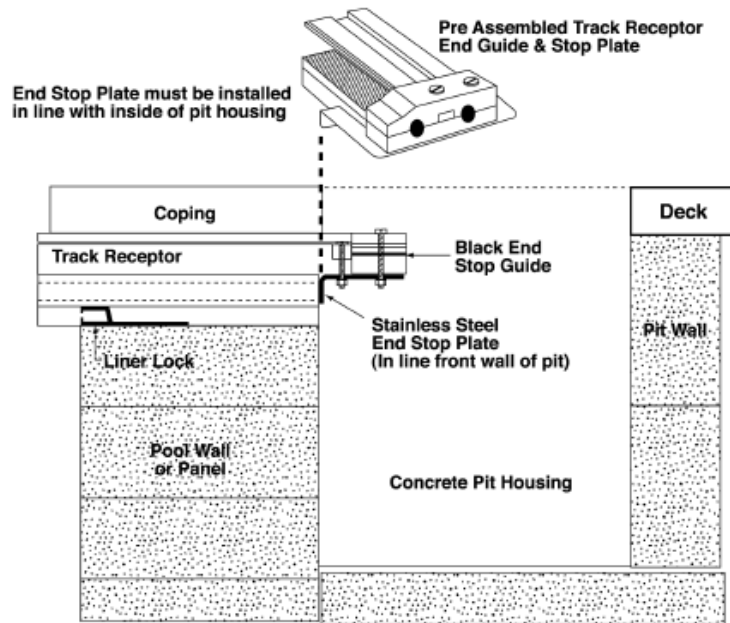
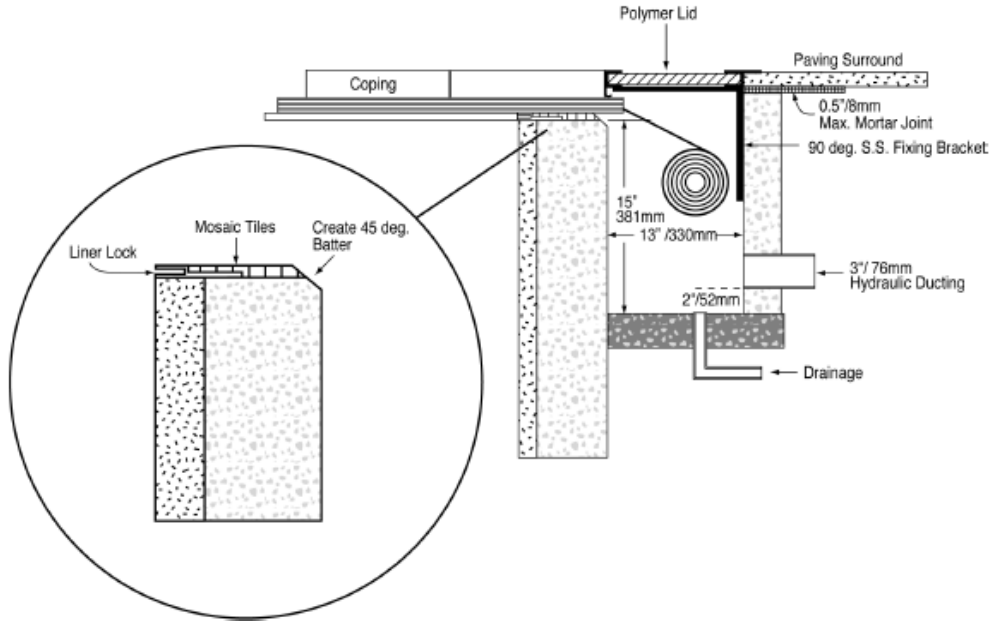
Now place the first piece of track into the receptor with the "U" channel up, and so that the end pulley is flush with the end of the receptor. Minimal force may be needed at the pulley to get it into the receptor. Continue with the remaining pieces of track until all have been inserted. The rope will hold the pieces together, so it may be a little cumbersome.

Next insert a piece of grey plastic shim under the track so that it pushes the track up into the locking groove of the receptor. Start at the pulley end first and make your way towards the cover vault. Do not put the shim directly under the pulley, but just in front and place the shims end to end. Use a rubber mallet to finish tapping the shim in so that it is at least flush with the bottom edge of the receptor, be careful of any installed tile. Stop short of installing any piece that goes past the end of the track. You may use a small piece of shim and rubber mallet to hammer the large shim further into the receptor if you wish, but this isn't necessary. Repeat for the other side. Finish by placing electrical tape along the exposed edge of the track to protect it during deck installation.

In-wall Installation Guide - Page 2.

Vinyl Liner Pools

For the vinyl liner pool, the receptor will mount directly to the top of the pool wall. If using in-wall #2, make sure your liner bead is installed prior to mounting the receptor. Assuming the pool is ready to accept the receptor / track, you can begin the installation. You can start on either side, but be certain that you start at the opposite end of the mechanism housing and that the receptor is ran at least 3" in. beyond the tile line. Also run the receptor at least 3" in. into the cover recess, this will be cut down later. With both sides installed, place another piece perpendicular to the sided at the end of the pool opposite of the mechanism. This evens out the elevations for both the finished tile and deck applications. Later you will install a fascia (finish strip) in this end receptor.



CONCRETE PIT HOUSING - diagram 1

NOTE: End Stop Plate must be installed in line with inside of pit housing



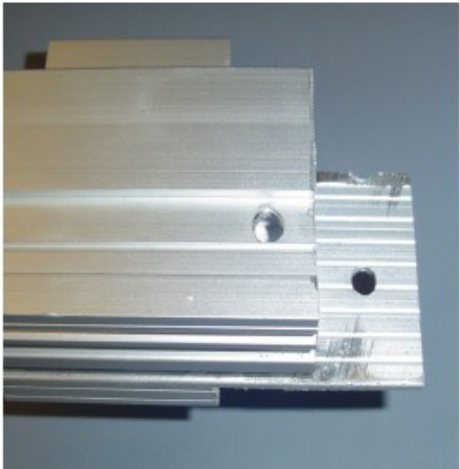
Minimum 2" in. beyond shallow end of pool



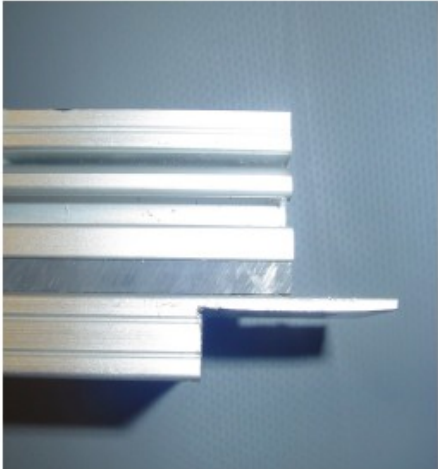
Minimum of 2" in. into vault



Always tape off ends and joints



Measure width of guide and cut



Measure width of stop plate and cut bottom and side #2-6



In-wall #4 seen in pictures above